

JMG 50 000 RE - 50 Tonnes Electrique



Flèche télescopique
Fléchette Hydraulique
Poids en ordre de marche
Contrepoids total
Hauteur Levage
Longueur Grue Pliée :
Largeur Grue
Hauteur Grue
Ecartement Stabilisateur Maxi :

17.00 m
9.00 m
21.820 Tonnes
2.000 Tonnes
18.00 m
5.13 m
2.05 m
2.81 m
4.85 m

Poids Maxi : 2.870 Tonnes

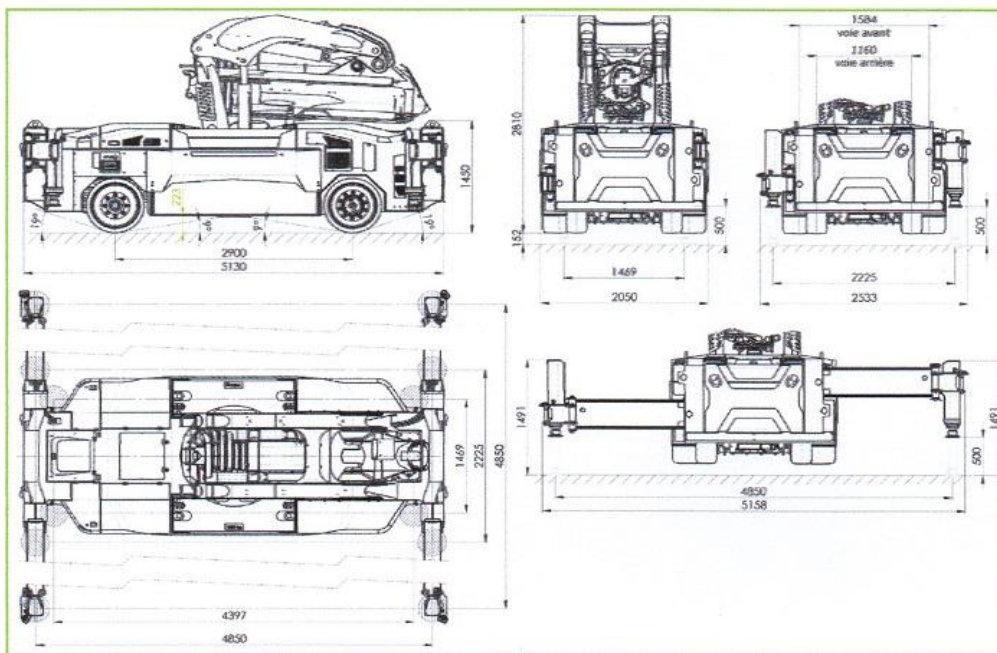
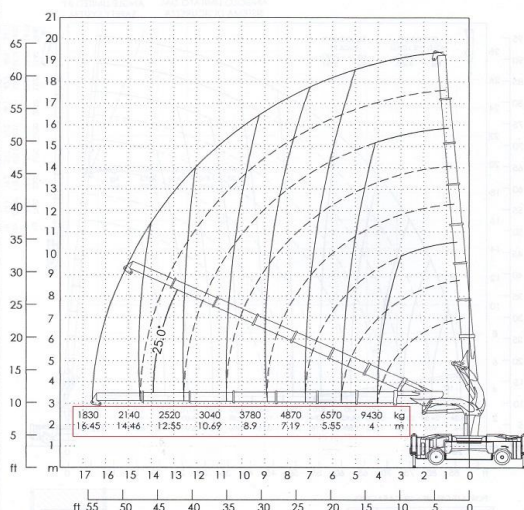


DIAGRAMMA DELLE PORTATE (kg-lbs)
CAPACITY DIAGRAM (kg-lbs)
TRAGLASTDIAGRAMM (kg-lbs)
LASTENDIAGRAM (kg-lbs)
TABLEAU DES CHARGES (kg-lbs)
DIAGRAMA DE LAS CARGAS (kg-lbs)

JMG

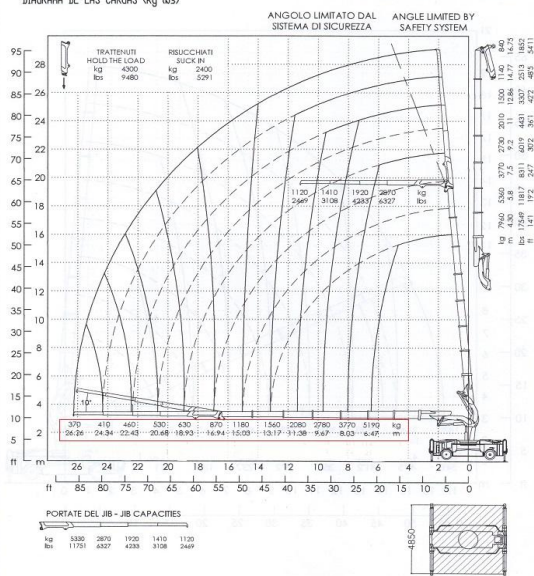


MC 50000RE

Cod.: 090-DIA-04898 A 1:125

DIAGRAMMA DELLE PORTATE (kg-lbs)
CAPACITY DIAGRAM (kg-lbs)
TRAGLASTDIAGRAMM (kg-lbs)
LASTENDIAGRAM (kg-lbs)
TABLEAU DES CHARGES (kg-lbs)
DIAGRAMA DE LAS CARGAS (kg-lbs)

JMG



MC 50000RE

Cod.: 090-DIA-04899 A 1:190