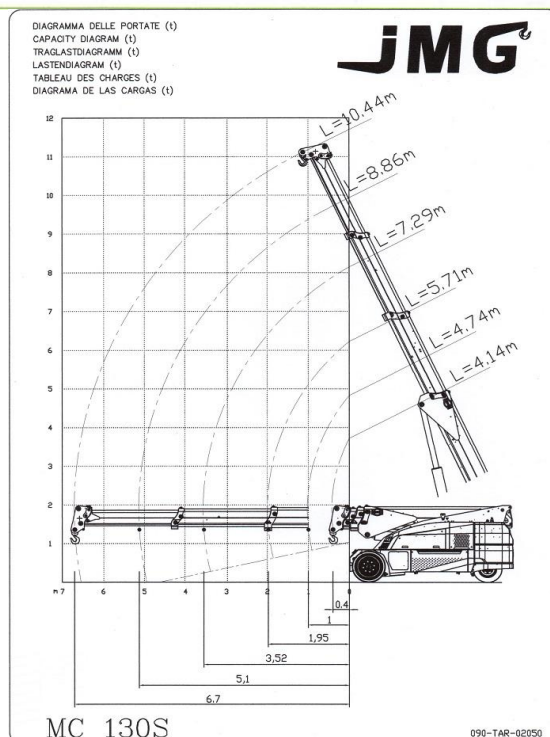
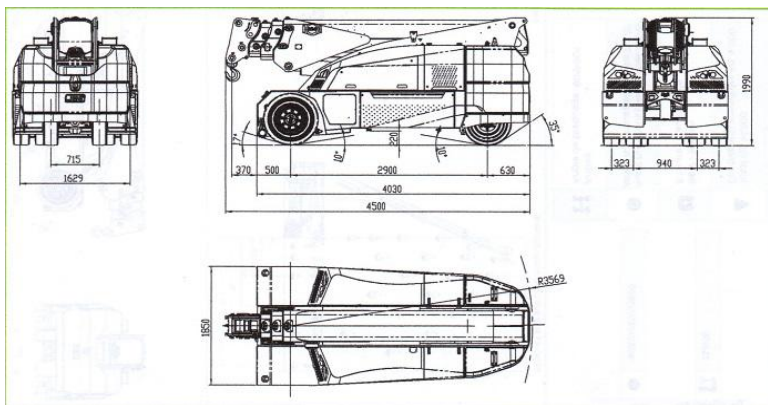





# JMG MC 130 S - 13 Tonnes Electrique



Flèche télescopique	6.70 m
Fléchette Hydraulique :	2.70 m Poids Maxi : 6.5 Tonnes
Poids en ordre de marche	14.500 Tonnes
Contrepoids total	4.000 Tonnes
Hauteur Levage	11.00 m
Longueur Grue Pliée :	4.50 m
Largeur Grue	1.85 m
Hauteur Grue	2.00 m








			0'		Z1 Z2	
						

MC130S

090-DIA-02010



<div> <div>   0° </div> <div>  </div> <div> Z1 Z2 </div> </div>							
(t)	4,14m	4,74m	5,71m	7,29m	8,86m	10,44m	
0,05m	13	13	13	11,3			
0,37m	13	13	13	11,2			
0,40m	0	13	13	11,2	9,7		
0,50m	0	13	13	11,2	9,7		
0,97m	0	12,1	12,1	11,2	9,4		
1,00m	0	0	12,1	11,2	9,4		
1,06m	0	0	12	11,2	9,3	7,5	
1,50m	0	0	11,5	11,2	9,1	7,2	
1,95m	0	0	10,0	10,0	8,9	6,9	
2,00m	0	0	0	10,0	8,9	6,9	
2,50m	0	0	0	8,1	8,1	6,6	
3,00m	0	0	0	6,8	6,8	6,4	
3,50m	0	0	0	5,7	5,7	5,7	
3,52m	0	0	0	0	5,6	5,6	
4,00m	0	0	0	0	5	5	
4,50m	0	0	0	0	4,3	4,2	
5,00m	0	0	0	0	3,8	3,8	
5,10m	0	0	0	0	3,7	3,7	
5,50m	0	0	0	0	0	3,4	
6,00m	0	0	0	0	0	3	
6,50m	0	0	0	0	0	2,7	
6,67m	0	0	0	0	0	2,6	

MC130S

090-DIA-02013