

JMG MC 45S - 4.5 Tonnes Electrique



| | | |
|--------------------------|--------------|-----------------------|
| Flèche télescopique | 4.30 m | |
| Rallonge : | 5.74 m | Poids Maxi : 2 Tonnes |
| Poids en ordre de marche | 4.830 Tonnes | |
| Contrepoids total | 1.400 Tonnes | |
| Hauteur Levage | 7.20 m | |
| Longueur Grue Pliée : | 3.00 m | |
| Largeur Grue | 1.20 m | |
| Hauteur Grue | 1.64 m | |

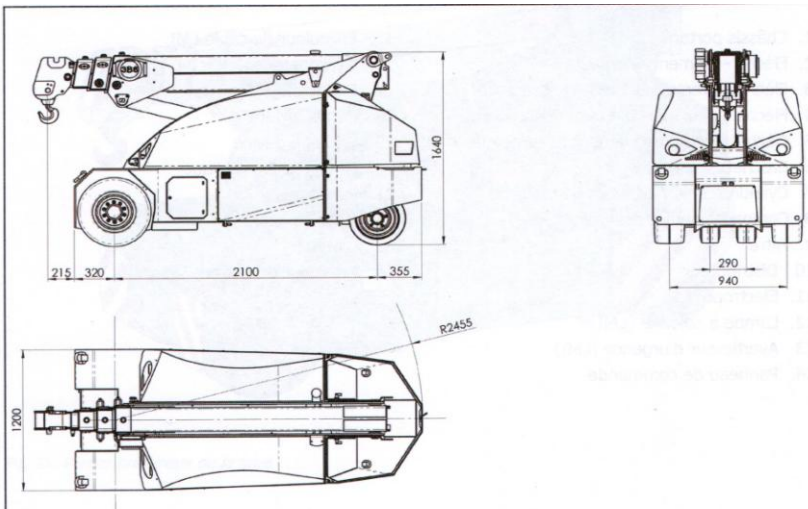
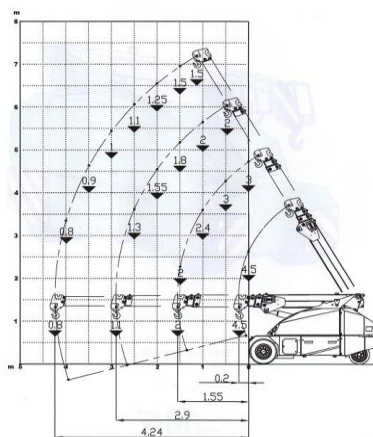


DIAGRAMMA DELLE PORTATE (t)
CAPACITY DIAGRAM (t)
TRAGLASTDIAGRAMM (t)
LASTENDIAGRAM (t)
TABLEAU DES CHARGES (t)
DIAGRAMA DE LAS CARGAS (t)
WYKRES OBCIĄZEN (t)

JMG

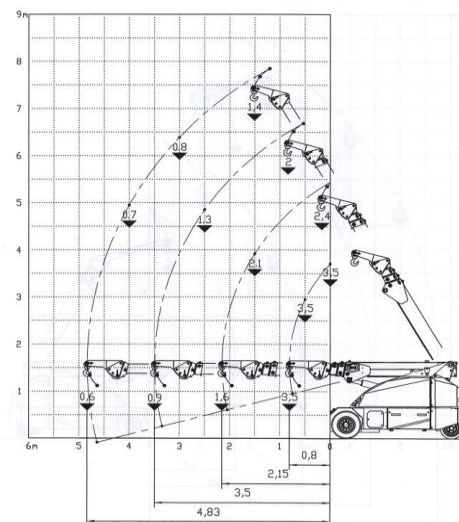
JMG
MILANO - ITALY



MC 45S 21+22

Cod.: 090-DIA-
Scale: 1:55

DIAGRAMMA DELLE PORTATE (t)
CAPACITY DIAGRAM (t)
TRAGLASTDIAGRAMM (t)
LASTENDIAGRAM (t)
TABLEAU DES CHARGES (t)
DIAGRAMA DE LAS CARGAS (t)



MC45S 21+22

COD. 090-DIA-0218 00 H